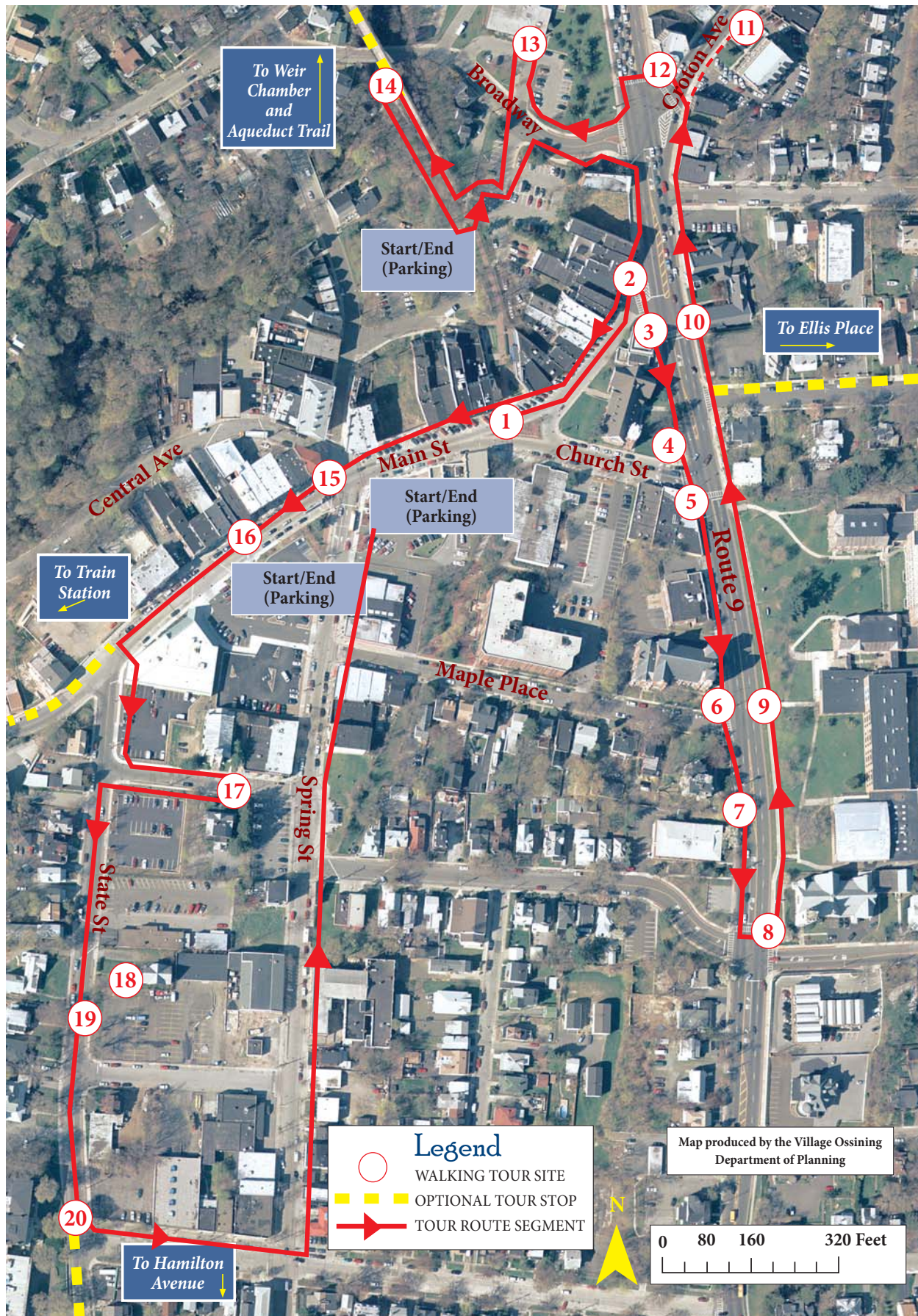


Village of Ossining Downtown Walking Tour



Village of Ossining Downtown Walking Tour



1
Old Croton Aqueduct Promenade
c. 1842



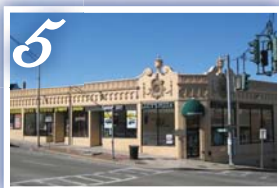
2
The Crescent
Late 19th Century



3
Ossining Bank for Savings
1980s



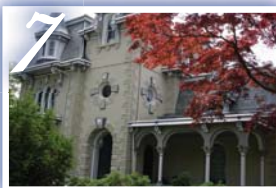
4
First Baptist Church
1874



5
Cynthard Building
1929



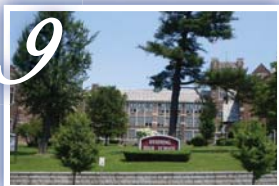
6
First Presbyterian Church
1885



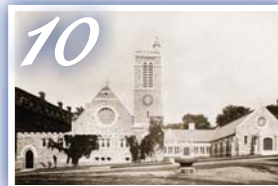
7
Highland Cottage
1872



8
United Methodist Church
1885



9
Ossining High School
1929



10
Trinity Episcopal Church
1892



11
Ossining Municipal Building
1915



12
First National Bank
and Trust Company
1930



13
Ossining Community Center
and Museum Exhibit



14
Double Arches
1842



15
Ossining National Bank
1842



16
Lower Main Street
Late 19th Century



17
Calvary Baptist
Church and Annex
1834 and 1864



18
Mount Pleasant Military
Academy Library
c. 1870



19
James Robinson House
1860



20
Smith Robinson House
c. 1834

Additional Sites



Ellis Place
c. 1850



Ossining Weir Chamber
1842



Old Croton Aqueduct Trail
c. 1968



Ossining
Railroad
Station
1914



Hamilton
Avenue
c. 1890s

Acknowledgements

VILLAGE OF OSSINING BOARD OF TRUSTEES

Mayor William R. Hanauer
Marlene Cheatham
John Codman III
Robert Daraio
Manuel Quezada
Village Manager Richard Leins

VILLAGE OF OSSINING HISTORIC PRESERVATION COMMISSION

Joanne Tall, Chair
Miguel Hernandez
Frederick Roberts
Eric Schatz
Alan Stahl
Deborah Van Steen

VILLAGE OF OSSINING DEPARTMENT OF PLANNING

Valerie Monastra, AICP
James Rather

The production of this document has been financed in part with federal funds from the National Park Service, Department of the Interior. However, the contents and opinions do not necessarily reflect the views or policies of the Department of the Interior, nor does the mention of trade names or commercial products constitute recommendation or endorsement by the Department of the Interior. The production of this document has been administered by the New York State Office of Parks, Recreation, and Historic Preservation and the Village of Ossining. This program receives Federal funds from the National Park Service. Regulations of the U.S. Department of the Interior strictly prohibit unlawful discrimination on the basis of race, color, national origin, age, or handicap. Any person who believes he or she has been discriminated against should write to: Director, Equal Opportunity Program, U.S. Dept. of the Interior, National Park Service, P.O. 37127, Washington, D.C. 20013-7127.

Please visit the Village of Ossining's website at www.villageofossining.org for links to further information on the locations featured within this document and to download the Significant Sites and Structures Guide, a document highlighting over sixty areas of historic and architectural significance within Ossining.