

What is the DRI?



What is the Downtown Revitalization Initiative (DRI)?



The New York State Downtown Revitalization Initiative (DRI) program is a comprehensive approach to boosting local economies by transforming communities into vibrant neighborhoods where the next generation of New Yorkers will want to live, work, and raise a family.

Every year, each of the State's ten Regional Economic Development Councils award funding to one or two downtowns that have the potential to become a magnet for redevelopment, business, job creation, housing diversity, and opportunity.

In December 2021, the Village was selected as one of the Mid-Hudson Winners and awarded \$10 million. The Village of Haverstraw was also selected.

A Strategic Investment Plan for Downtown Ossining



The \$10 million in DRI funding will go towards improvements within the Village and support development of a Strategic Investment Plan for downtown Ossining, which includes the following components:

- Vision, goals, and strategies
- A public engagement strategy
- A downtown profile and assessment, which will characterize existing conditions
- Identification of projects that catalyze or continue downtown revitalization
- A management and implementation strategy

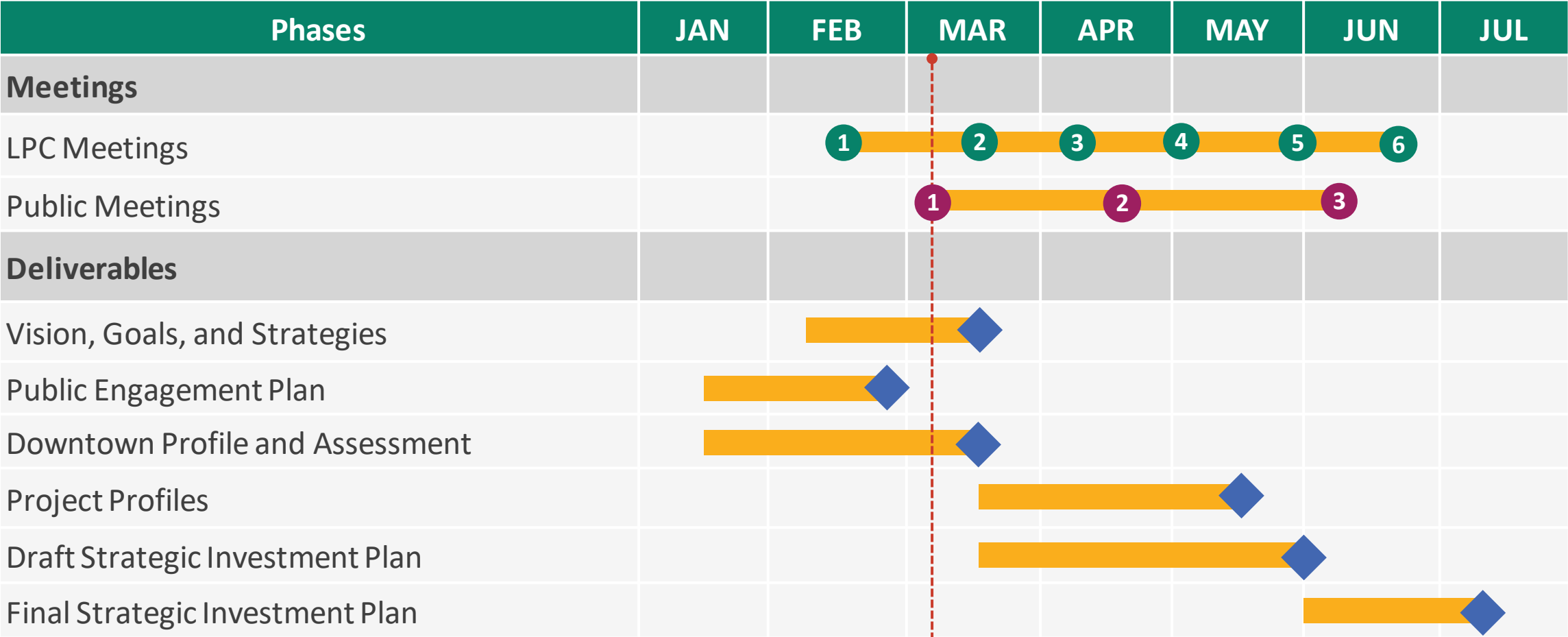
After the Strategic Investment Plan is completed, it will be submitted to the multi-state DRI program for final funding decisions.

How does the DRI planning process work?



- A **Local Planning Committee (LPC)** made up of local and regional leaders will meet regularly to guide the DRI planning process and represent the interests and priorities of the community.
- Over the next several months, the LPC will meet to guide the project team, discuss the vision, goals, and strategies, review planning documents, and evaluate and recommend proposed projects. The public is invited to view these working meetings and provide comment at the end.
- There will also be multiple **community meetings to solicit feedback from the public** on the vision and goals for downtown Ossining and the proposed projects in the DRI boundary.
- This process is supported by a consultant team, staff from the Village of Ossining, and a team from New York State who will provide expertise, guidance, and technical assistance.

Timeline: DRI Planning Process



 LPC Meeting  Community Meeting  Deliverable



Today