



Village of Ossining
DOWNTOWN REVITALIZATION INITIATIVE

Village of Ossining Downtown Revitalization Initiative

LPC Meeting 4

May 5, 2022



**Downtown
Revitalization
Initiative**

Agenda



- Welcome, Conflicts of Interest, and Recusal Disclosure [12:00 to 12:10 pm]
- Project Evaluation Process [12:10 to 12:40 pm]
- Project Sponsor Presentations [12:40 to 1:40 pm]
 - Sing Sing Prison Museum
 - Olive Opera House
 - Town of Ossining
- Next Steps [1:40 to 1:45 pm]
- Opportunity for Public Comment [1:45 to 2:00 pm]

Opportunity for Public Comment



- There are a few ways to ask a question or share a comment:
 - Raise hand (*9 if using telephone)
 - Q&A box
- If you submit a question or raise hand during the presentation, note that we'll see it but will not address them until the public comment session.
- The chat function will be disabled during the meeting to reduce distraction
- The meeting and all commentary is being recorded.



Welcome, Conflicts of Interest, and Recusal Disclosure

Project Evaluation Process

Project Evaluation Process



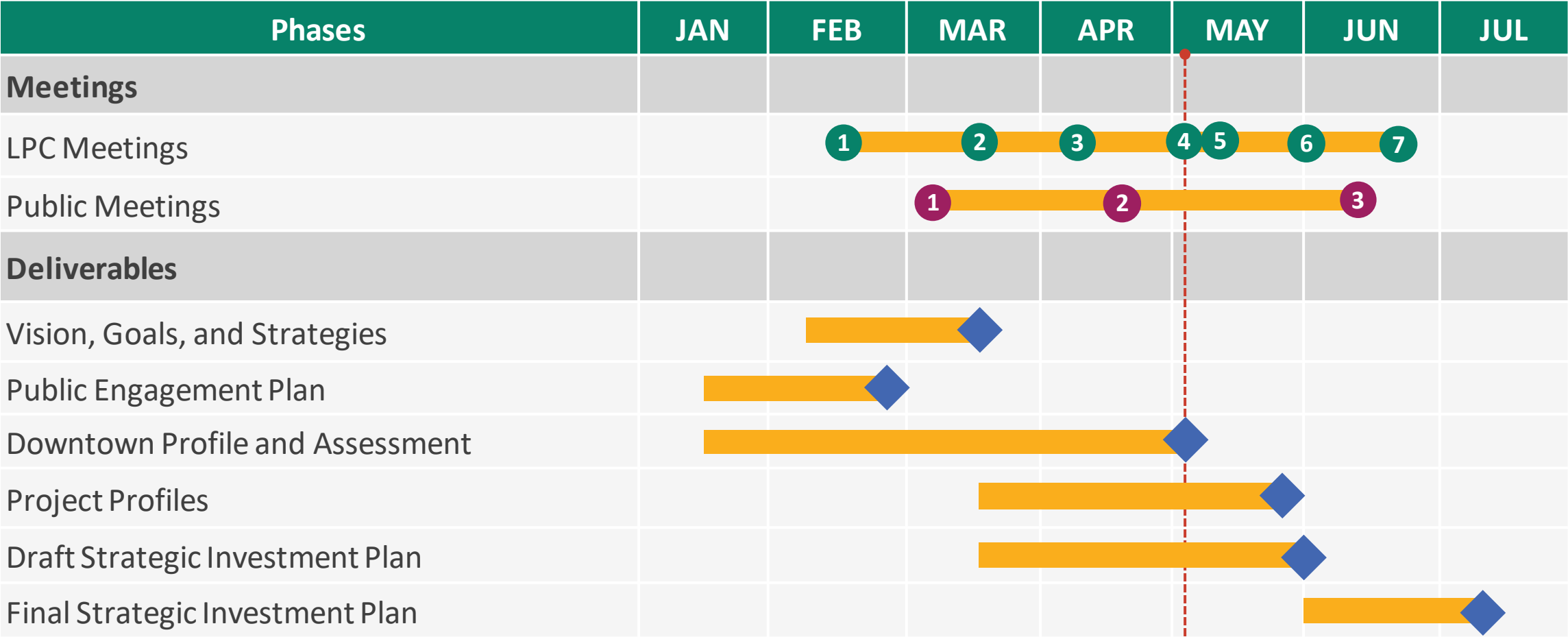
- Projects selected for DRI funding should catalyze or continue downtown revitalization and investment.
- In June, the LPC will be asked to recommend a slate of potential DRI projects, which will then be submitted to the multi-agency State DRI program for final funding decisions.
- Today (at LPC Meeting 4), we will do the following:
 - Review the feedback that was collected at the second Community Meeting
 - Review the Project Evaluation Criteria that the LPC will use to determine which projects to recommend for DRI funding
 - Discuss the opportunities for feedback at the third Community Meeting
 - Hear from three Project Sponsors about their proposed DRI projects
- We will also circulate the Downtown Profile and Assessment for your review and comment.

Project Evaluation Process



- Next week (at LPC Meeting 5), we will hear from the Village of Ossining about their proposed DRI projects.
- Prior to LPC Meeting 6, we will provide draft project profiles for your review.
- At LPC Meeting 6, we will ask that you assess each project and select a preliminary slate of projects to recommend for DRI funding.
- The preliminary slate of projects selected by the LPC will be shared at a third and final Community Meeting, with an opportunity for feedback.
- Prior to LPC Meeting 7, we will share community feedback with the LPC and provide updated project profiles (where applicable).
- At LPC Meeting 7, the LPC will vote on the slate of DRI projects that will be recommended to the State.

The DRI Planning Process



 LPC Meeting  Community Meeting  Deliverable



Feedback from Community Meeting 2



- The objectives of Community Meeting 2 were to help participants understand the DRI planning process and offer feedback on the proposed DRI projects.
- This feedback will inform the LPC in your decision-making process.
- The meeting included a presentation and “station visits,” during participants learned about each proposed DRI project and were asked three questions:
 - Does this project have the potential to be transformative or catalytic for Downtown Ossining?
 - What do you like about this project?
 - How would you improve this project?
- Two projects had additional targeted questions, which will be discussed next week:
 - Public Improvements as Part of Mixed-Use Development at Main Street Lots
 - Streetscaping at Station Plaza

Feedback from Community Meeting 2



- Approximately 40 meeting participants provided a total of 116 comments across 15 proposed projects.
- Of the 116 total comments, 35 were generally positive (i.e., "love this idea") while 11 were generally negative (i.e., "I don't see the purpose of this project").
- The remaining comments included suggestions and other ideas (i.e., "need more shops," "change direction of the stage," and "yes to parking as long as public space is preserved").
- The project with the most comments was Public Improvements as Part of Mixed-Use Development at Main Streets Lots (23), followed by the Louis Engel Park Performance Space (12) and the Sing Sing Kill Greenway Improvements (10).
- Those who could not attend the community meeting in-person can view the meeting materials online and offer feedback until Friday May 20 at **www.bit.ly/ossiningdri**

Project Evaluation Criteria



- At LPC Meeting 6, you will be asked to assess the proposed DRI projects using project evaluation criteria. The following are based on guidance from New York State:
 - Transformative and Catalytic Potential
 - Will this project significantly enhance downtown?
 - Will this project make other things happen, i.e. attract other public and private investment?
 - Will the project have a long-term impact?
 - Does the project have the potential to create benefit beyond the DRI boundary?
 - Project Readiness and Feasibility
 - Can the project break ground within two years?
 - Are there any regulatory hurdles?
 - Sponsor Capacity
 - Can the project sponsor reasonably participate in the project financially?
 - Will the project be successfully maintained and managed over time?
 - Public Support
 - Does the project have public support?

Project Evaluation Criteria



- Two of the criteria are based on input from the LPC, which was provided via by survey between LPC Meetings 3 and 4:
 - Economic Benefit
 - Will this project increase tax revenue?
 - Will this project create new jobs and/or workforce development opportunities for a diverse group of people?
 - Will this project increase economic activity in Ossining, thereby supporting the growth of existing businesses and/or the creation of new businesses?
 - Community Benefit
 - Will this project improve the quality of life for those who live in Ossining, and deepen a sense of pride and belonging among residents?
 - Will this project increase the quantity and diversity of goods and services?
 - Will this project improve walkability, connectivity, and ease of access to Downtown Ossining?
 - Does this project advance sustainability and decarbonization?

Feedback at Community Meeting 3



- The objectives of Community Meeting 3 are to help participants understand how the LPC has evaluated the proposed DRI projects and offer feedback on the preliminary slate of DRI projects that the LPC selected to recommend to the State for DRI funding.
- We expect the meeting to begin with a presentation that reviews the preliminary slate of DRI projects that the LPC selected to recommend to the State for DRI funding.
- We would also expect to solicit community feedback—and would like your input on how that feedback is gathered! Potential interactive activities include:
 - Survey
 - Dot voting
 - Budgeting exercise

Project Sponsor Presentations

Project Sponsor Presentations



- The Project Sponsors who we are hearing from today will provide the following information for their proposed DRI projects:
 - Project sponsor, and any project partners
 - Project location
 - Current conditions at the project location, if applicable
 - Proposed project, including timeline for implementation and benefits
 - Project budget and DRI funding request

Project Sponsor Presentations



- At LPC Meeting 6, you will be asked to assess the proposed DRI projects using the project evaluation criteria listed below:
 - Transformative and Catalytic Potential
 - Project Readiness and Feasibility
 - Sponsor Capacity
 - Public Support
 - Economic Benefit
 - Community Benefit



Sing Sing Prison Museum Preview Center

Sponsor: Sing Sing Prison Museum

Sing Sing Prison Museum



Olive Opera House Gallery Budget	
Site Improvements	\$85,000
Exhibition Design	\$42,500
Exhibition Fabrication	\$425,000
Contingency	\$42,500
Project Management	\$42,500
Exhibition Deinstallation	\$60,000
Total	\$697,500

Olive Opera House

Sponsor: Twisne Fan

Louis Engel Park Performance Space

Sponsor: Town of Ossining

Next Steps



Thursday, May 12
6:00 to 8:00 pm
Hybrid (Village Hall/Zoom)



Early June
Time: 6:00 to 8:00 pm
Hybrid (Village Hall/Zoom)



Mid June
Time: 6:00 to 8:00 pm
In Person (Community Center)

Public Comment



- You can ask a question or offer a comment by using the "Raise hand" feature on Zoom
 - Press *9 if using telephone
- Please limit your question or comment to two minutes.
- The meeting and all commentary is being recorded.





Village of Ossining
DOWNTOWN REVITALIZATION INITIATIVE

Thank You!

For questions, email OssiningDRI@vhb.com or
visit www.VillageofOssining.org to learn more.

Louis Engel Waterfront Park Upgrades - Downtown Revitalization Initiative

TOWN OF OSSINING, NEW YORK

Louis Engel Waterfront Park Upgrades

Project Sponsor

Town of Ossining

Project Partners

Westchester County Community
Development Block Grants

NYS DEC – Climate adaptive Design
Studio Phase II Project



Overall Louis Engel Waterfront Park Project



Existing Conditions



Proposed Timeline

Projected Timeline for Completion

Each Milestone Commences Following Grant Agreement:

- Currently working on concept design and costs
- Month 1: Grant Award and Agreement Execution
- Months 2-6: Development of Final Design
- Months 6-9: Development of Bid Specifications
- Month 10: Advertise Public Bid
- Months 11-12: Receive Proposals and Award Contract
- Months 13-18: Construction



Project Budget and DRI Funding Request

Louis Engel Park					
	Funding Source				
<u>Project</u>	<u>Westchester County CDBG</u>	<u>Town of Ossining</u>	<u>NYS DEC</u>	<u>DRI Request</u>	<u>Timeline</u>
Climate-adaptive Design Studio Phase II	\$ -	\$ -	\$ 125,000.00	\$ -	2022
Louis Engel Park - Bathroom Relocation Phase I	\$ 72,500.00	\$ 72,500.00	\$ -	\$ -	2022
Louis Engel Park - Bathroom Relocation Phase II	\$ 200,000.00	\$ 200,000.00	\$ -	\$ -	2023
Performance Space	\$ -	\$ 150,000.00	\$ -	\$ 150,000.00	2024
Bathroom at North End of Louis Engel Park	\$ 75,000.00	\$ 75,000.00	\$ -	\$ -	2024
	\$ 347,500.00	\$ 497,500.00	\$ 125,000.00	\$ 150,000.00	\$ 1,120,000.00

Thank you!

Ossining Town Supervisor's Office
(914) 762-6001

Dana Levenberg-
dlevenberg@townofossining.com

Victoria Cafarelli-
vcafarelli@townofossining.com

