



Village of Ossining
DOWNTOWN REVITALIZATION INITIATIVE

Village of Ossining Downtown Revitalization Initiative

LPC Meeting 5

May 12, 2022



**Downtown
Revitalization
Initiative**

Agenda



- Welcome, Conflicts of Interest, and Recusal Disclosure
- Recap of Project Evaluation Process
- Project Sponsor Presentations
 - The Village of Ossining
- Next Steps
- Opportunity for Public Comment [7:45 to 8:00 pm]

Opportunity for Public Comment



- There are a few ways to ask a question or share a comment:
 - Raise hand (*9 if using telephone)
 - Q&A box
- If you submit a question or raise hand during the presentation, note that we'll see it but will not address them until the public comment session.
- The chat function will be disabled during the meeting to reduce distraction
- The meeting and all commentary is being recorded.



Welcome, Conflicts of Interest, and Recusal Disclosure

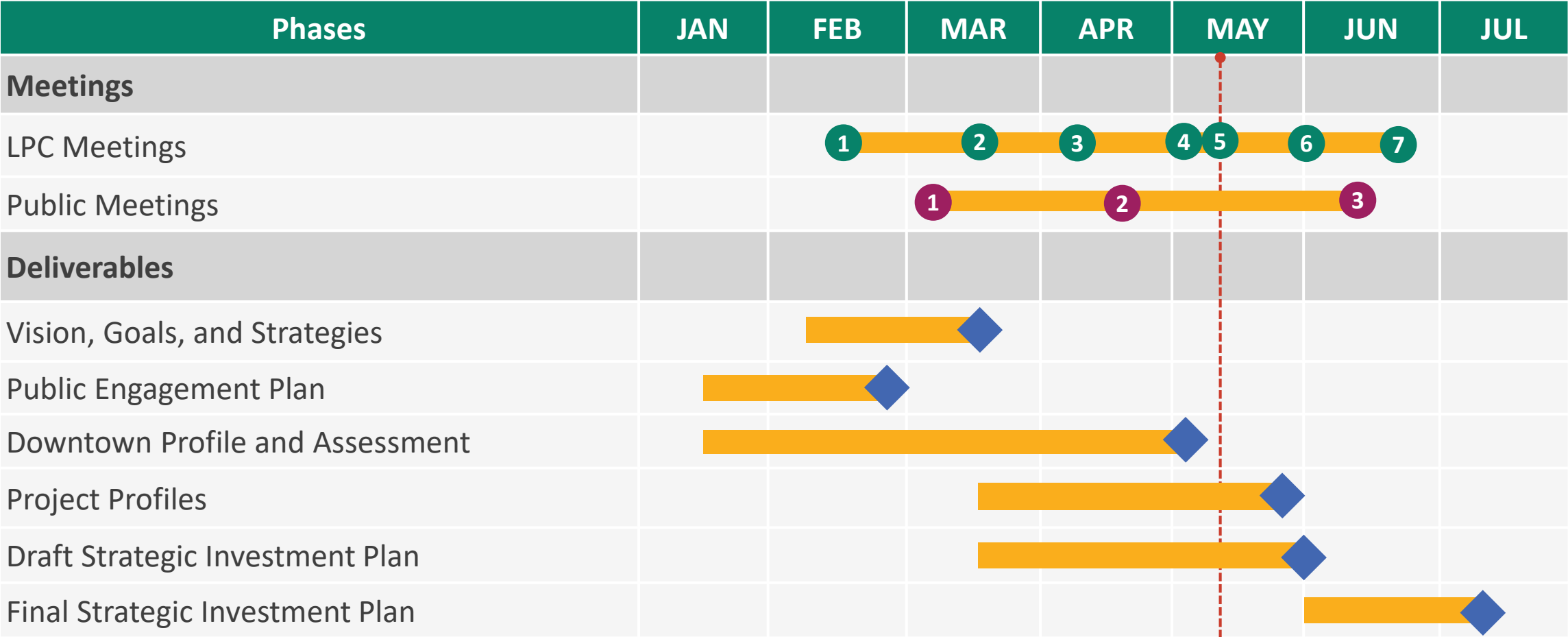
Project Evaluation Process

Project Evaluation Process: Recap



- Following today's meeting, we will ask that you provide an initial assessment of each proposed DRI project.
- Then, prior to LPC Meeting 6, we will provide draft project profiles for your review.
- At LPC Meeting 6, we will ask that you assess each project and select a preliminary slate of projects to recommend for DRI funding.
- The preliminary slate of projects selected by the LPC will be shared at a third and final Community Meeting, with an opportunity for feedback.
- Prior to LPC Meeting 7, we will share community feedback with the LPC and provide updated project profiles (where applicable).
- At LPC Meeting 7, the LPC will vote on the slate of DRI projects that will be recommended to the State.

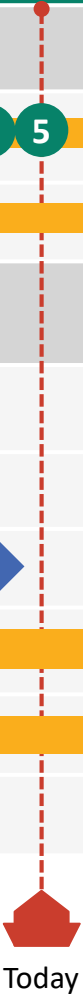
The DRI Planning Process



LPC Meeting

Community Meeting

Deliverable



Project Sponsor Presentations

Project Sponsors Presentations



- Project sponsors have been asked to provide the following information for their proposed DRI projects:
 - Project sponsor, and any project partners
 - Project location
 - Current conditions at the project location, if applicable
 - Proposed project, including timeline for implementation and benefits
 - Project budget and DRI funding request

Project Sponsor Presentations



- At LPC Meeting 6, you will be asked to assess the proposed DRI projects using the project evaluation criteria listed below:
 - Transformative and Catalytic Potential
 - Project Readiness and Feasibility
 - Sponsor Capacity
 - Public Support
 - Economic Benefit
 - Community Benefit
- Please keep these in mind as you listen to this evening's presentations.



[Insert Project Names]

Sponsor: Village of Ossining

Next Steps



Tuesday June 7
6:00 to 8:00 pm
Hybrid (Village Hall/Zoom)



Tuesday June 14
6:00 to 8:00 pm
In Person (Community Center)



Tuesday June 21
6:00 to 8:00 pm
Hybrid (Village Hall/Zoom)

Public Comment



- You can ask a question or offer a comment by using the “Raise hand” feature on Zoom
 - Press *9 if using telephone
- Please limit your question or comment to two minutes.
- The meeting and all commentary is being recorded.





Thank You!

For questions, email OssiningDRI@vhb.com or visit www.VillageofOssining.org to learn more.



Village of Ossining
DOWNTOWN REVITALIZATION INITIATIVE



NEW YORK
STATE OF
OPPORTUNITY.

**Downtown
Revitalization
Initiative**

Village of Ossining-Sponsored DRI Projects

May 12, 2022



Joseph G. Caputo Community Center Upgrades

95 Broadway

Revitalization starts with Community - Create a State-of-the-Art Community Center

- Optimize space, technology, environmental efficiency and sustainability
- Enhance educational and recreational program offerings
- Maximize intergenerational opportunities for health and wellbeing
- Create resources for greater Youth Bureau impact

Anticipated Completion: Summer 2024

Project Total Cost	DRI Funding	Village Support	Other Funding
\$6,100,000	\$2,500,000	\$3,100,000	\$500,000 (SAM Grant)



200 Main Street

Activate a Landmark Gateway

- RFP has been issued to identify a developer of this iconic gateway to Main Street
- A Main Street NY grant funded \$467,300 along with a match requirement of \$168,115 for remediation
- DRI investment in needed HVAC system and elevator will help ensure successful establishment of an attractive and valuable commercial asset

Anticipated Completion: Fall 2023



Project Total Cost	DRI Funding	Village Support	Other Funding
\$1,500,000	\$1,000,000	TBD	TBD

Redevelopment of Main Street Lots



Build on Main Street's momentum

- Reclaim and reactivate Main Street lots
- Provide an array of public assets, outdoor events space, business opportunities, housing, walkability and connectivity to mass transit for sustainable economic growth
- The Main Street lots redevelopment consists of 9 parcels over two sites located on opposite sides of Spring Street on the east side of Main Street in the heart of the Village downtown
- An RFQ for mixed-use developed on the Main Street lots will be issued, which will require:
 - the construction of offset parking on the Village-owned Brandreth Lot situated behind Main Street
 - an active public green space on the Main Street sites

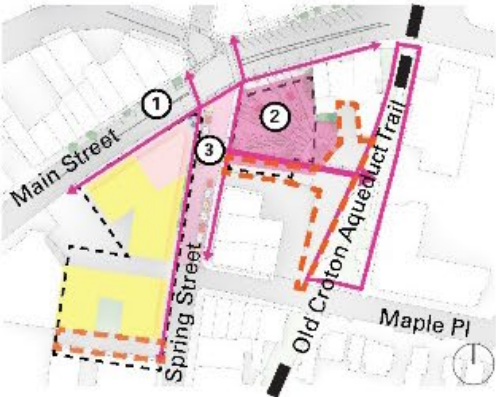
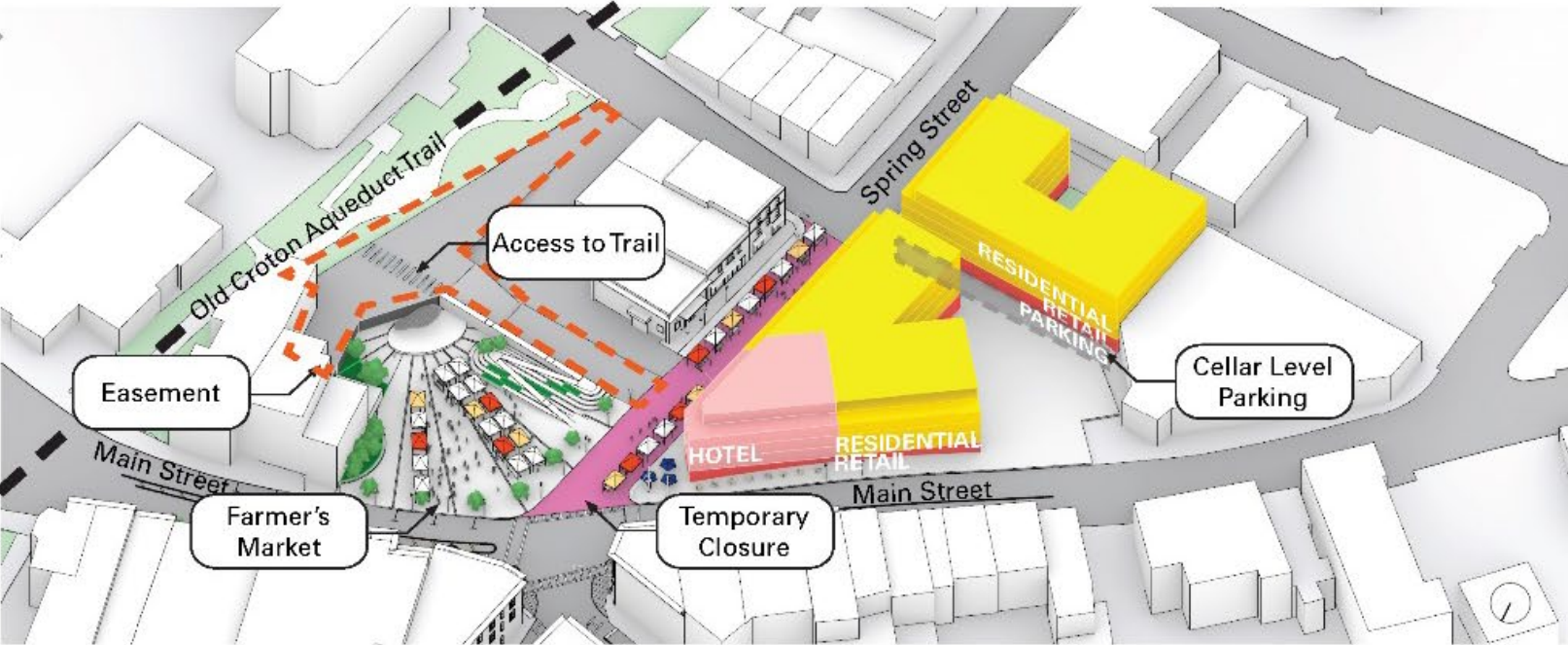
Redevelopment of Main Street Lots

Illustrative Options



Ossining - Option 1

Use	SF	%	Units	Parking
Retail	29,700	19%	-	89
Hotel	18,409	12%	37	41
Residential	86,996	54%	78	78
Affordable	9,555	6%	8	8
Off-Site Parking				216
Parking spaces	14,388	9%		180
Public Space				41
Permanent	19,200			5
Temporary	9,800			
Built SF	158,047	FAR		
Site Parcels	41,459	3.8		



1 Historic Old and New
Sterling Mason - New York City, NY
(Morris Adjmi)



2 Farmer's Market
Sequim Farmers & Artisans Market
Sequim, WA



3 Street Closure for Farmer's Market
Troy Market - Troy, NY

Redevelopment of Main Street Lots



DRI funding will be used to offset the cost of the public parking structure and the creation of a public plaza

Anticipated Commencement: Spring 2023

Project Total Cost	DRI Funding	Village Support	Other Funding
\$20,000,000	\$3,000,000	TBD	TBD

Façade Improvements Along Main Street, Spring Street & Station Plaza

Preserve the architecture that's key to Ossining's identity

- The Village will use DRI funding to establish a program to support façade improvements with the DRI Boundary Area
- Once established, the Village can replicate this project in other business corridors within the Village
- A revolving fund of up to \$600,000, administered by a local non-profit partner (10% management fee paid with Village funds), will allow the Village to provide assistance and incentives to property owners in the DRI area

Anticipated Commencement: Fall 2023



Project Total Cost	DRI Funding	Village Support	Other Funding
\$660,000	\$600,000	\$60,000	N/A

Streetscaping at Station Plaza



Improve a vital link

- The Village will beautify the Station Plaza neighborhood and its businesses through improved streets, widened sidewalks, ADA accessibility and placemaking
- These improvements will complement the development at 30 Water Street while improving access to a Village-owned train station lot
- They will support the local neighborhood homes and business and will enhance walkability, bikability and connectivity between the waterfront and upper Main Street

Anticipated Commencement: Spring 2023

Project Total Cost	DRI Funding	Village Support	Other Funding
\$500,000	\$350,000	\$150,000	N/A

30 Water Street Improvements

Foster place making, connectivity and environmental ingenuity

- The plans for Wilder Balter’s mixed income, mixed use development at 30 Water Street will complete the Sing Sing Kill Greenway and will connect Station Plaza to the Community Center and Main Street with an ADA accessible walkway unlike any other
- To enhance the 30 Water Street project and to establish the Sing Sing Kill Greenway as destination unto itself, the Village is proposes the installation of 3 rock ramp fish ladders

Anticipated Completion Summer 2024

Barrier #1
Concrete encasement of new municipal sewer line. Similar to a small dam.

Photo taken from the Sing Sing Kill Greenway walking platform. View from below.

Not easily visible in this image is that the far side of the waterflow area is nearly passable by fish now. Only minor modifications needed.



Barrier #2
Waterfall at the end of the brick Race under the Old Croton Aqueduct Double Arches structure.

Photo taken from the Sing Sing Kill Greenway walking platform looking upstream.



Barrier #3
Culvert on left has freefall of 0.7 feet.

Only minor modifications needed to enable fish passage. Deposition of perhaps 10 cubic yards of cobble should mitigate this barrier.

Rock ramp fishways are built using large size rocks and timber logs. In this type of fishway, a rock ramp is prepared directly over the obstruction across its width with some slope. Pools and falls are created by these large rocks in such a way that the fishes can easily pass over them.



Fig 10: Rock Ramp Fishway, Cape Fear River Dam, USA

Rock ramp fishways are well suitable for low height obstructions, where upstream water level control is not essential and some barriers suitable for rock ramp fishway are low height weirs, short waterfalls, channel stabilization structures, etc.

Project Total Cost	DRI Funding	Village Support	Other Funding
\$400,000	\$375,000	\$25,000	N/A

Community Sculpture Display Reboot

Instill art and beauty

- Ossining celebrated its bicentennial with a Community Sculpture Display and walking tour
- This project will curate a “reboot” for the 10-year anniversary (2023) using DRI funds to purchase pieces and create permanent public art installations.
- This project will further enhance the Ossining experience by creating a walkable, outdoor, public art and history installation throughout the Downtown Waterfront District



Anticipated Completion: Spring 2024

Project Total Cost	DRI Funding	Village Support	Other Funding
\$125,000	\$125,000	N/A	N/A

Ferry Service Expansion

Improve access to the river and the region

- To generate greater riverfront activity, tourism and regional development, a joint pilot project to expand the Haverstraw-Ossining Ferry is proposed
- The pilot project will provide ferry service for one day each weekend running from May 1st through October 31st
- The DRI funds will assist with the marketing of the weekend service and subsidize a portion of the cost for each ferry ticket

Anticipated Commencement: Spring 2023



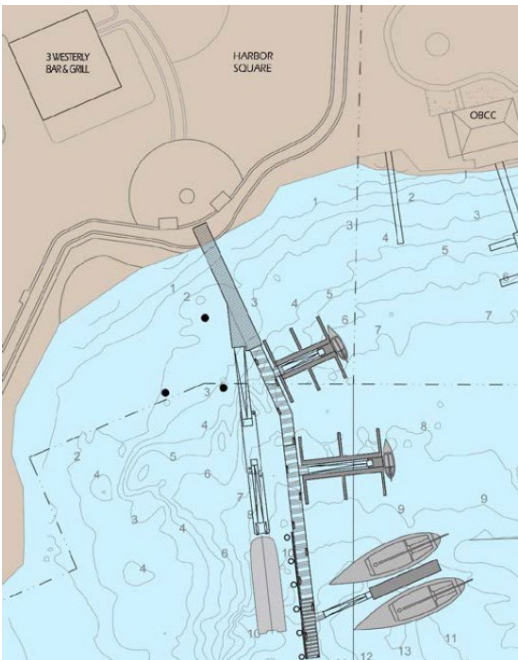
Project Total Cost	DRI Funding	Village Support	Other Funding
\$255,000	\$200,000	\$27,500	\$27,500 (Haverstraw)

Village Pier Extension



Encourage more activity on the riverfront

- The estimated cost of construction of the Ossining Pier Extension is \$1.5M. The cost and timing are also dependent on whether all permitted components of the design are built, or just a subset.
- Phase 1 could include a fixed pier and one foot floating dock to accommodate the large ships.
- Phase 2 could entail two blocks of transient docking for smaller boats.
- DRI funding will allow this plan to become a reality that will promote tourism and economic development for Ossining, Haverstraw, and other riverfront communities.
- Other funding sources could be a mix of public and private funds.



Anticipated Completion: Summer 2023

Project Total Cost	DRI Funding	Village Support	Other Funding
\$1,500,000	\$1,500,000	N/A	N/A

Free Public Wifi in Downtown

Ensure access to information for equity, opportunity and inclusion

- Ossining will partner with Nuture to provide WiFi services throughout the DRI Boundary Area
- DRI funds will be used to purchase and connect a series of WiFi transmitters to existing fiber optic lines, and installing outdoor access points meant to create a “net” throughout the public right-of-way
- The Village's contribution will entail the continuation of the service after installation with Nuture is complete

Anticipated Completion: Spring 2023



Project Total Cost	DRI Funding	Village Support	Other Funding
\$156,240	\$156,240	N/A	N/A

Wayfinding Signage for Downtown Parking & Amenities

Invest in multimodal wayfinding.

There are three main categories of wayfinding signs:

- **Decision signs:** these are placed at intersections of streets and bike facilities, and include directional cues to key destinations to inform the pedestrian and bicyclist of the best route to get to their destination.
- **Confirmation signs:** let users know that they are on the chosen route
- **Turn signs:** alert users where to turn to continue on their chosen route, and are often paired with pavement markings (particularly in the bicycle network) to ensure that users don't miss the turn

Signs should indicate the time and distance to reach specific destinations, and those with maps should identify and include an index of key landmarks. Wayfinding signage design should be consistent across a geographic area, and across transportation modes.

Figure 12 Example of a Bicycle Wayfinding System



Facilitate new and sustainable modes of transportation

- Wayfinding signage will enable visitors and residents to navigate more safely, efficiently and easily through the downtown
- New wayfinding signage will encourage and support economic vitality by helping to increase motor vehicle, bicycle and foot traffic to local businesses, while making commutation on foot or by bicycle safer and more intuitive (and reducing emissions!)

Project Total Cost	DRI Funding	Village Support	Other Funding
\$150,000	\$125,000	\$25,000	N/A

Anticipated Completion: Summer 2023

Marketing Campaign



Position Ossining as the ideal live, work, play destination

- A strategic marketing campaign will help advance the preservation of local businesses, increase tourism, encourage economic investment and instill pride among residents
- Marketing will augment efforts of individual businesses, the Chamber of Commerce, with benefits to the School District and non-profit agencies as well

Anticipated Commencement: Spring 2023

Project Total Cost	DRI Funding	Village Support	Other Funding
\$150,000	\$150,000	N/A	N/A