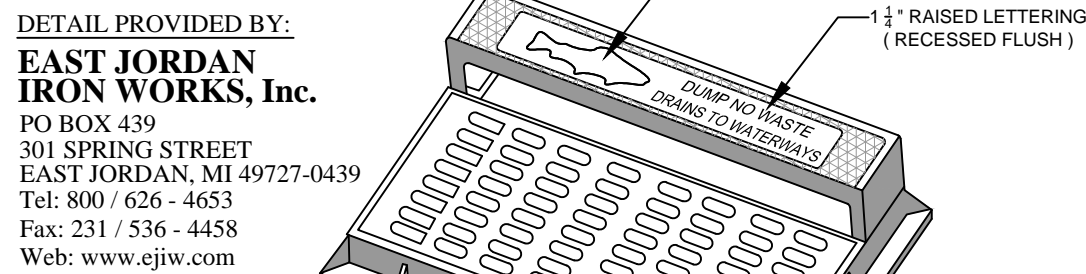


**INFILTRATION TRENCH #1 & 2 DETAIL**  
NTS

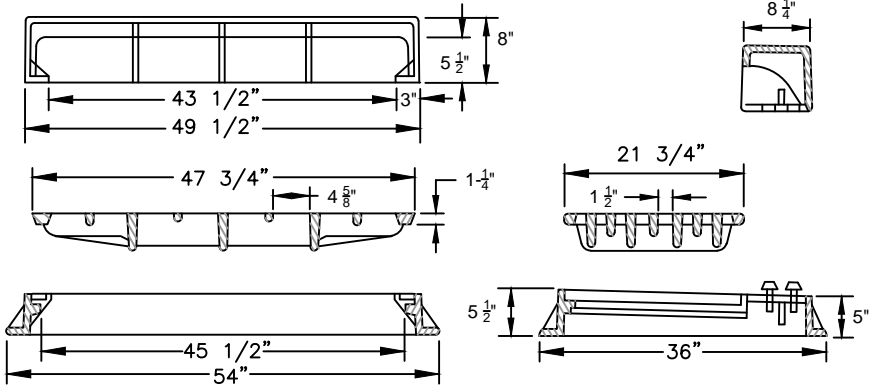


**7591 CURB & GUTTER INLET**

HEAVY DUTY  
7590 TYPE M GRATE AND T9 BACK  
APPROXIMATE 414 sq. in. OPEN AREA  
USES 7590 GRATES AND BACKS  
USES 7590 GRATES AND BACKS

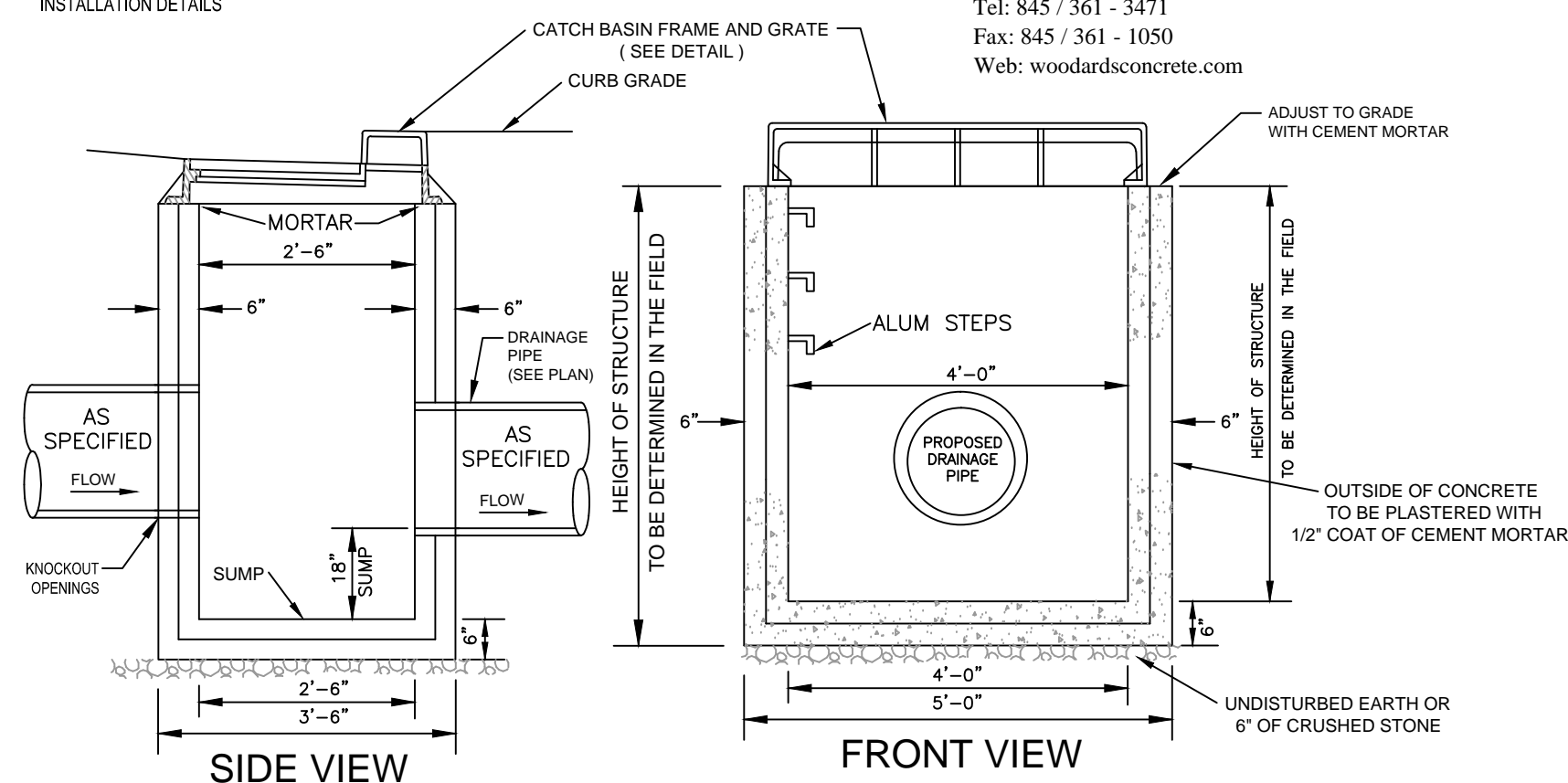
OPTIONS:  
7590M2 ADA GRATE  
7590 TYPE M1 GRATE

BACK TYPE	BACK HEIGHT
T5	4"
T6	6"
T7, T11	6"
T8, T12	8"
T9	10"



**HEAVY DUTY CURB INLET**  
N.T.S.

PRECAST CATCH BASIN SPECIFICATIONS	
CONCRETE MINIMUM STRENGTH: 4,000 PSI AT 28 DAYS	
REINFORCEMENT: #4 REBAR, FIBER AIR ENTRAINMENT: 5%	
WEIGHTS: 5' BASE = 4,400 LBS, RISERS = 1,100 LBS E.F.	
LOAD RATINGS: H20, TRUCK TRAFFIC	



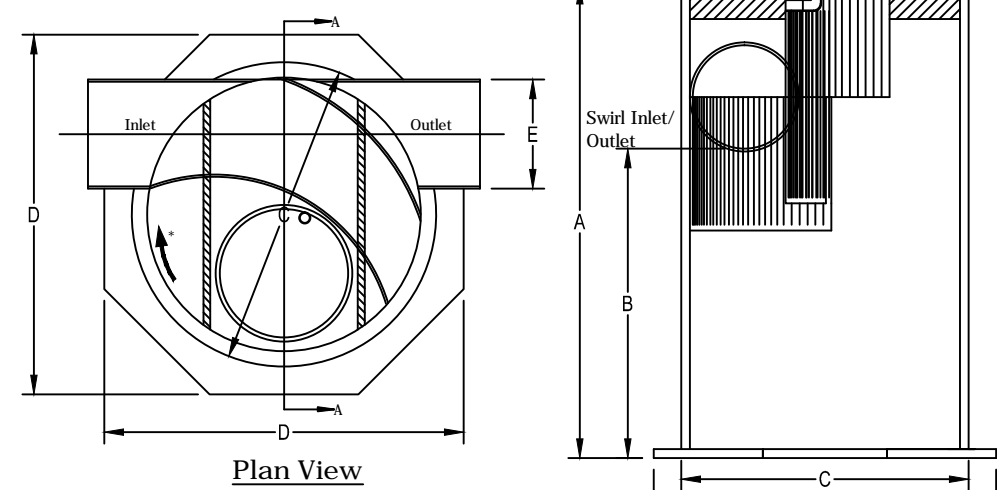
**PRECAST CONCRETE CATCH BASIN DETAIL**  
N.T.S.

Aqua-Swirl Dimensions				
Aqua-Swirl Model #	Chamber Height	Chamber Depth to Invert	Chamber Outside Diameter	Base Plate Max. Pipe Outside Diameter
AS-3	104"	66"	39"	52" x 52"
AS-4	104"	66"	54"	66" x 66"
AS-5	104"	66"	60"	72" x 72"

Bollards shall be placed around access riser(s) in non-traffic areas to prevent inadvertent loading by maintenance vehicles

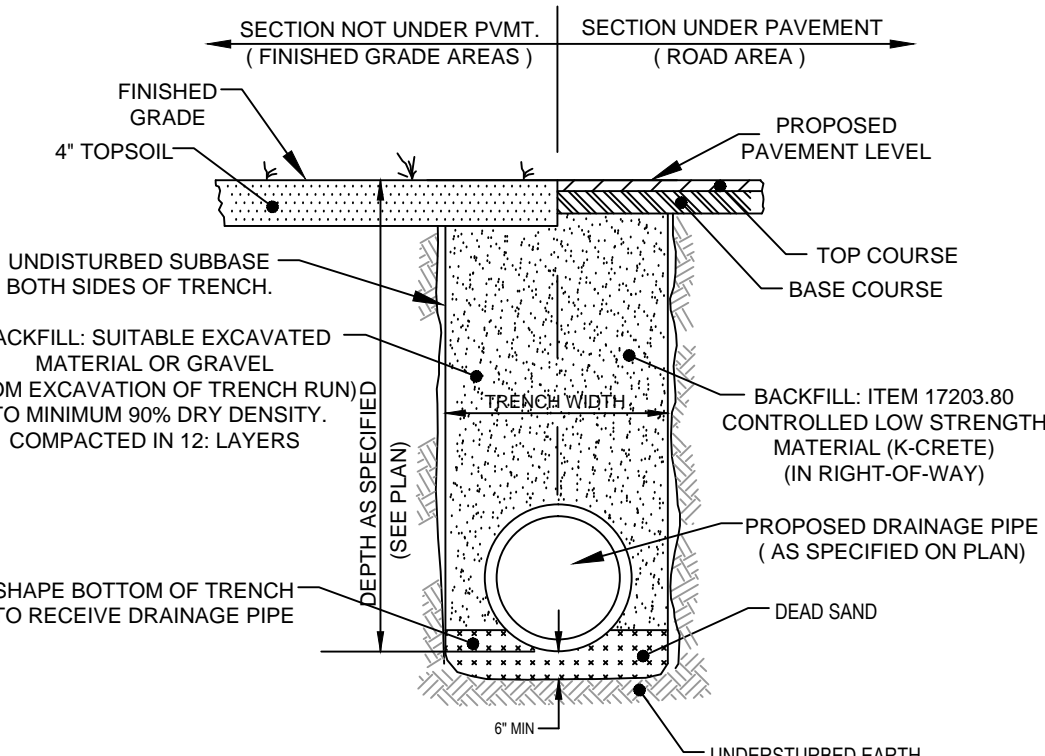
If traffic loading (H-20) is required or anticipated, a concrete pad must be placed over the entire Stormwater Treatment System. Sample details of concrete pad available upon request.

\* Unit may be fabricated for clockwise or counter-clockwise flow direction.



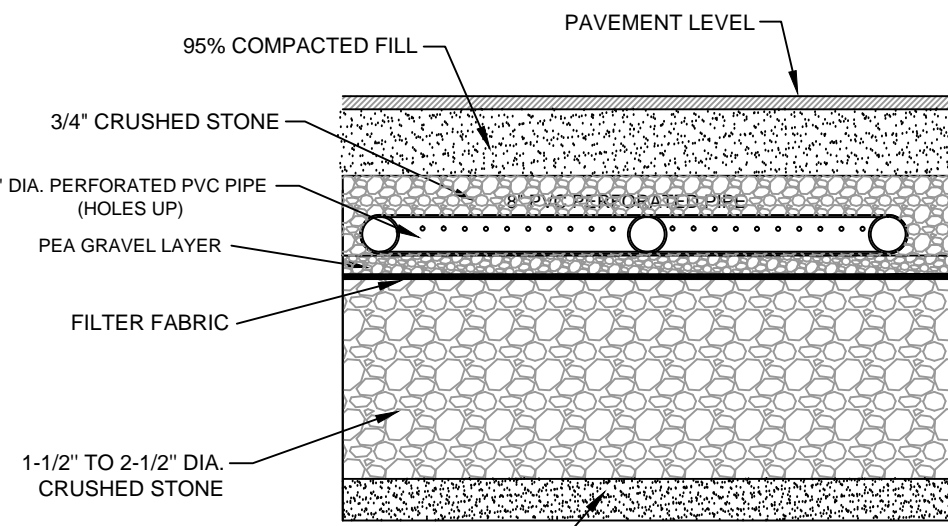
**STORMWATER PRE-TREATMENT, AQUA-SWIRL FILTER**  
NTS

TRENCH NOTE:  
INSTALL T.L. TEMPORARY SURFACE COURSE AT THE END OF EACH WORK DAY UNLESS THE USE OF ANOTHER TEMPORARY SURFACE (FOR EXAMPLE: STEEL PLATE, PROCESSED AGGREGATE, COLD PATCH, ECT.) IS SPECIFICALLY APPROVED BY THE ENGINEER.

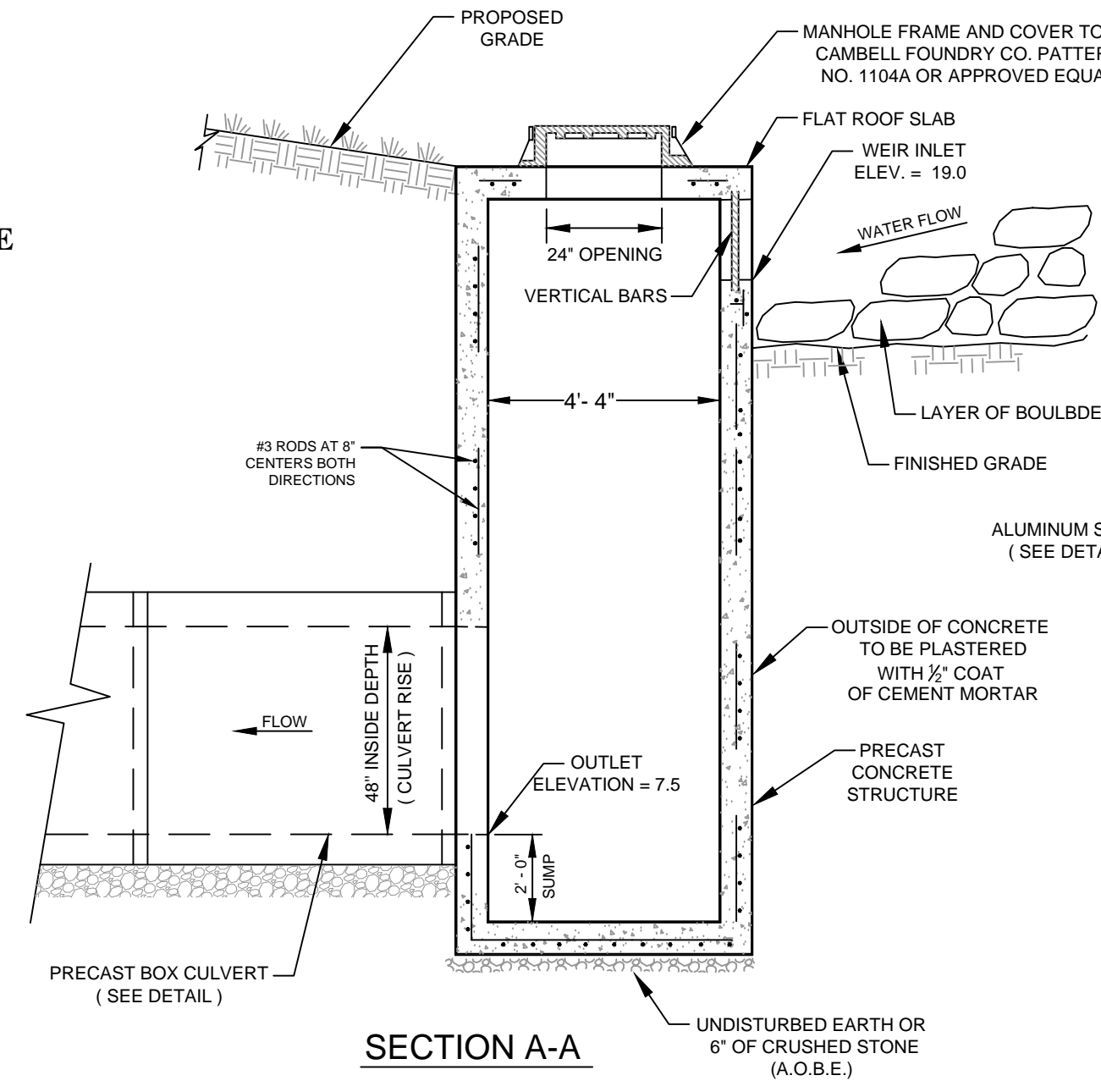


**DRAINAGE TRENCH DETAIL**  
NTS

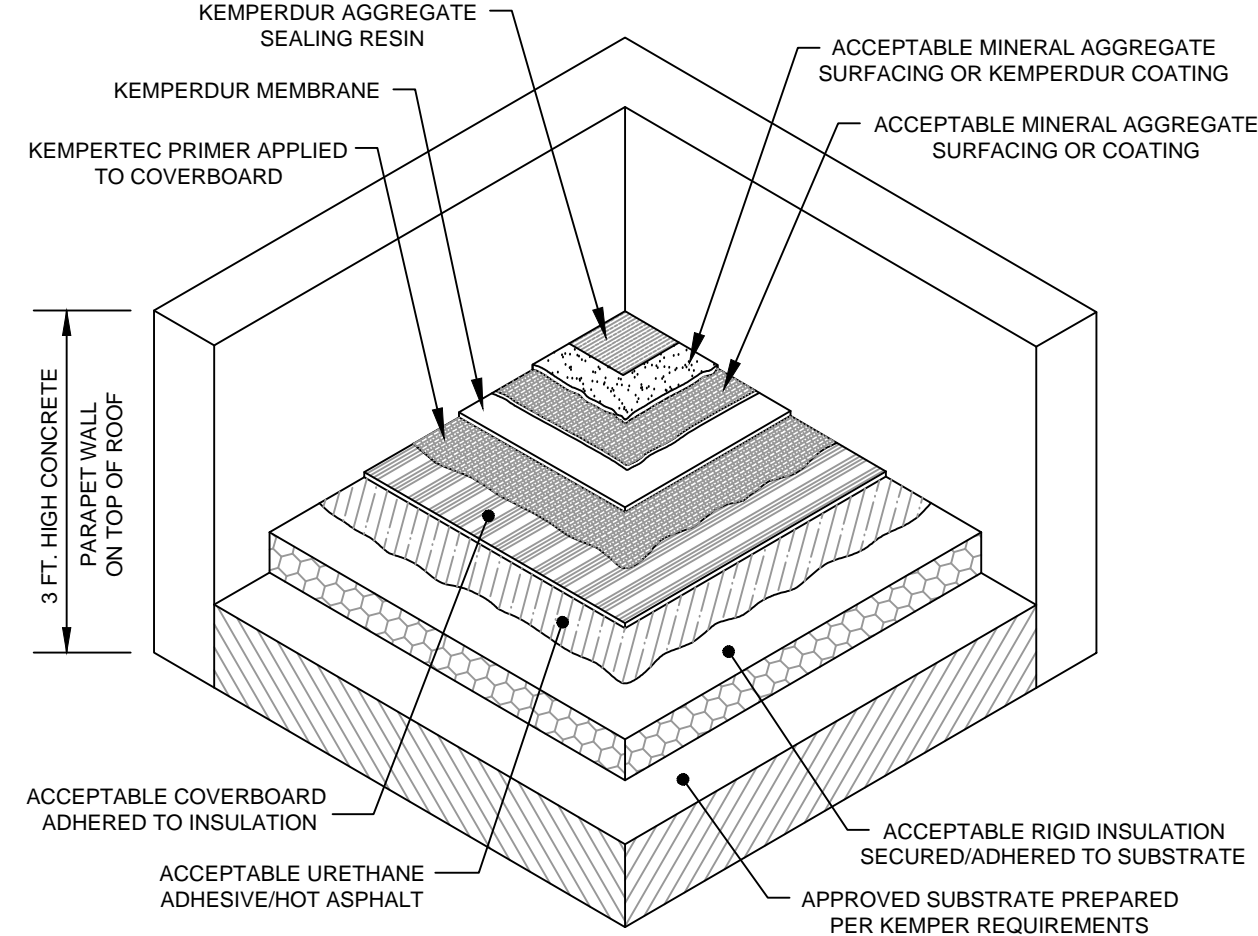
DRAINAGE STRUCTURE NOTES:  
1. THE CONTRACTOR SHALL SUBMIT SHOP DRAWINGS FOR DRAINAGE STRUCTURE FOR THE ENGINEER'S APPROVAL PRIOR TO FABRICATION.  
2. STRUCTURE SHALL BE CERTIFIED AS CONFORMING TO ASTM-C913 LATEST REVISION.  
3. WALL THICKNESS: 6\"/>



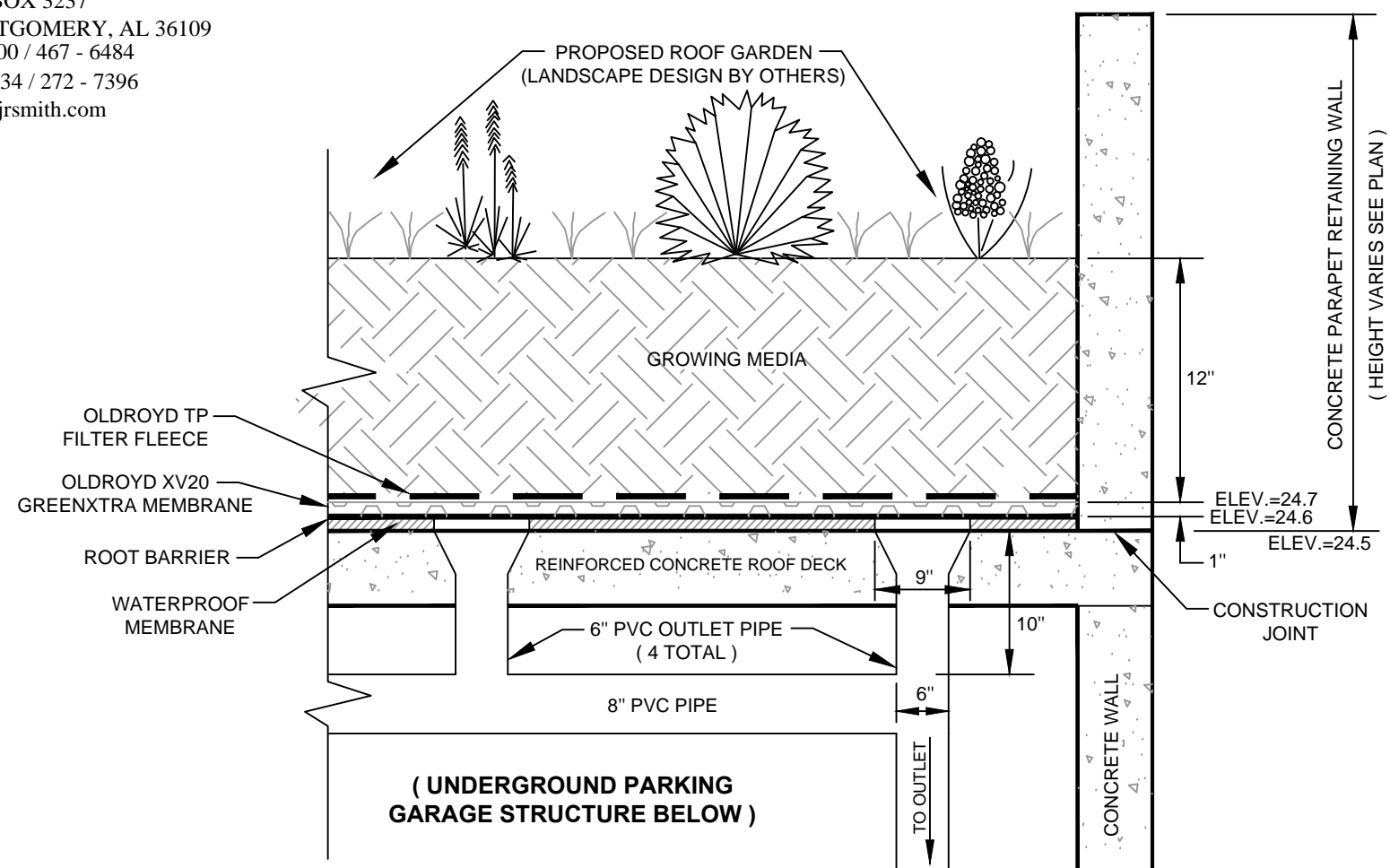
**INFILTRATION TRENCH #3 & #4 DETAIL**  
NTS



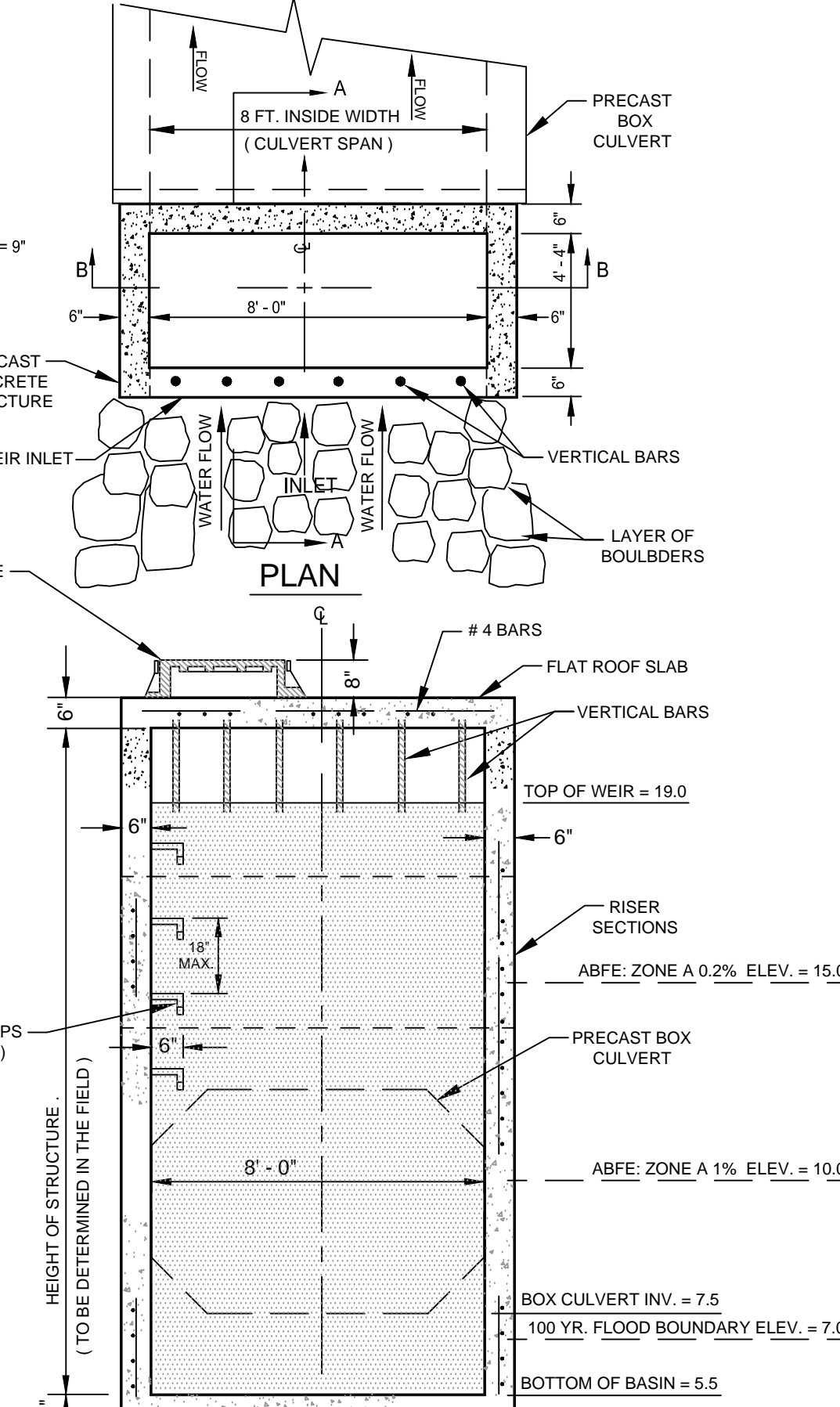
**PRECAST CONCRETE DRAINAGE STRUCTURE DETAIL**  
NTS



**WHITE ROOF SECTION DETAIL**  
NTS



**GREEN ROOF SECTION DETAIL (ROOF GARDEN)**  
NTS



**PRECAST CONCRETE BOX CULVERT DETAIL**  
NTS